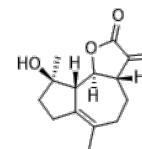


Product Name : Micheliolide
Cat. No. : PC-23535
CAS No. : 68370-47-8
Molecular Formula : C₁₅H₂₀O₃
Molecular Weight : 248.32
Target : Pyruvate Kinase
Solubility : 10 mM in DMSO



Biological Activity

Micheliolide (MCL) is a potent, selective and allosteric activator of PKM2, selectively activates pyruvate kinase M2 (PKM2) through the covalent binding at Cys424, effectively promotes the pyruvate kinase activity of rPKM2 with AC50 of 6 nM, shows broad-spectrum anticancer and anti-inflammation activity.

Micheliolide (MCL) selectively inhibits acute myelogenous leukemia stem and progenitor cells.

Micheliolide (MCL) inhibited NF- κ B activation and subsequent pro-inflammatory pathways activation in vitro and in vivo.

Micheliolide inhibits LPS-induced inflammatory response and protects mice from LPS challenge.

Micheliolide provides protection of mice against Staphylococcus aureus and MRSA infection by down-regulating inflammatory response.

References

Zhang Q, et al. J Med Chem. 2012 Oct 25;55(20):8757-69.

Li J, et al. J Med Chem. 2018 May 10;61(9):4155-4164.

Jiang X, et al. Sci Rep. 2017 Feb 6;7:41964.

Viennois E, et al. Lab Invest. 2014 Sep;94(9):950-65.

Caution: Product has not been fully validated for medical applications. Lab Use Only!

E-mail: tech@probechem.com